

BALDOR • RELIANCE

Customer information packet

34N655S944G1

.56HP, 3450RPM, 1PH, 60HZ, D71CZ, 3428L, TEFC

Brahma Engineering LLC.

Class - None

Division - Not Applicable

Specifications

Enclosure	TEFC
Frame	D71CZ
Frame Material	Steel
Frequency	60.00 Hz
Haz Area Class and Group	None
Haz Area Division	Not Applicable
Motor Letter Type	Cap Start, Induction Run
Output @ Frequency	.750 HP @ 60 HZ
Phase	1
Synchronous Speed @ Frequency	3600 RPM @ 60 HZ
Voltage @ Frequency	120.0 V @ 60 HZ 220.0 V @ 60 HZ
Agency Approvals	C UR US
Ambient Temperature	40 °C
Auxillary Box	No Auxillary Box
Auxillary Box Lead Termination	None
Base Indicator	Rigid
Bearing Grease Type	Polyrex EM (-20F +300F)
Blower	None
Current @ Voltage	4.400 A @ 220.0 V 8.700 A @ 120.0 V
Design Code	L
Drip Cover	No Drip Cover
Duty Rating	CONT
Efficiency @ 100% Load	67.0 %
Electrically Isolated Bearing	Not Electrically Isolated
Feedback Device	NO FEEDBACK
Frame Prefix	D
Front Shaft Indicator	None
Heater Indicator	No Heater
High Voltage Full Load Amps	4.4 a
Insulation Class	F

Part detail

Revision	A
Type	AC
Mech. spec.	34N655
Base	
Status	PRD/A
Elec. spec.	34WGS944
Layout	34LYN655
Eff. date	04-03-2025
CD Diagram	CD0008
Poles	02
Leads	7#18
Proprietary	False
Created date	03-12-2025

Inverter Code	Not Inverter
IP Rating	NONE
KVA Code	K
Lifting Lugs	No Lifting Lugs
Locked Bearing Indicator	Locked Bearing
Motor Lead Quantity/Wire Size	7 @ 18 AWG
Motor Lead Termination	Cord And Plug
Motor Standards	IEC
Motor Type	3428L
Mounting Arrangement	F2
Number of Poles	2
Overall Length	12.10 IN
Power Factor	79
Product Family	General Purpose
Pulley End Bearing Type	Ball
Pulley Face Code	C-Face
Pulley Shaft Indicator	Key Only (When Non-STD)
Rodent Screen	None
RoHS Status	ROHS COMPLIANT
Service Factor	1.00
Shaft Diameter	0.551 IN
Shaft Ground Indicator	No Shaft Grounding
Shaft Rotation	Reversible: Connected OPP STD
Shaft Slinger Indicator	No Slinger
Speed	3450 rpm
Speed Code	Single Speed
Starting Method	Direct on line
Thermal Device - Bearing	None
Thermal Device - Winding	None
Vibration Sensor Indicator	No Vibration Sensor
Winding Thermal 1	Automatic Thermal Overload
Winding Thermal 1 Location	SB
Winding Thermal 2	None

Nameplate

NP1379L			
CAT.NO.	.75HP		
SPEC.	34N655S944G1		
IEC FRAME	D71CZ	K.W.	.56 TE
VOLTS	120/220		
AMP	8.7/4.4		
RPM	3450	I.P.	44
HZ	60	PH	1 CL F
SER.F.	1.00	DES	L CODE K
NEMA-NOM-EFF	67	PF	79
RATING	40C AMB-CONT		
CC			
DE	6203	ODE	6203
SER. #			
	ENCL TEFC		

Parts list

Part number	Description	Quantity
SA435777	SA 34N655S944G1	1.000 ea
RA428093	RA 34N655S944G1	1.000 ea
EC1400A03SP	ELEC CAP, 400-480 MFD, 125V, 1.81D X 3.	1.000 ea
NS2512A01	INSULATOR, CONDUIT BOX X	1.000 ea
34CB3002A138P	CB W/.66 DIA @ 12 & .50 DIA @ 6	1.000 ea
34GS1029A01	GASKET, CONDUIT BOX	1.000 ea
51XB1016A07	10-16 X 7/16 HXWSSLD SERTYB	2.000 ea
11XW1032G06	10-32 X .38, TAPTITE II, HEX WSHR SLTD U	1.000 ea
WD4102A01	SR-6L-1 HEYCO STRN RELIEF OR 23MPO6L10 M	1.000 ea
HA6006A02	G7-96 SPECIAL GUARD-PURCH	1.000 ea
85XU0407S04	4X1/4 U DRIVE PIN STAINLESS	2.000 ea
SP9067	SW,3PDT TAB	1.000 ea
HW1003A50	LOCKWASHER,1/2",EXT.TOOTHZINC PLATED	1.000 ea
HA3205A50	U550-N SWITCH NUT/CARLING	1.000 ea
WD1000A16	2-520128-2 AMP FLAG TERMINAL(4M/RL)	1.000 ea
51XB1016A05	10-16X5/16HX WA SL SR TYB (F/S)	2.000 ea
51XW0832A07	8-32 X .44, TAPTITE II, HEX WSHR SLTD SE	2.000 ea
34EP3102A01SP	FR ENDPLATE, MACH	1.000 ea
HW5100A03	WAVY WASHER (W1543-017)	1.000 ea
34EP1503A07	PU ENDPLATE, MACH	1.000 ea
51XN1032A20	10-32 X 1 1/4 HX WS SL SR	2.000 ea
XY1032A02	10-32 HEX NUT DIRECTIONAL SERRATION	4.000 ea
34FN3002A01SP	EXTERNAL FAN, PLASTIC, .637/.639 HUB W/	1.000 ea
34FH4002A01SP	IEC FH NO GREASER PRIMED	1.000 ea
51XW1032A06	10-32 X .38, TAPTITE II, HEX WSHR SLTD S	3.000 ea
34CB4517	CB LID 4 MTG HOLES .22 DIA STAMPED, FOR	1.000 ea
34GS1031A01	GASKET, FLAT CONDUIT BOX LID (LEXIDE)	1.000 ea
51XW0832A07	8-32 X .44, TAPTITE II, HEX WSHR SLTD SE	4.000 ea
HW2504D04	KEY, 5 MM X .625 LONG	1.000 ea
HA7000A10	KEY RETAINER 0.563 DIA SHAFTS	1.000 ea
MJ5001A27	32220KN GRAY SEALER *MIN BUY 4 QTS=1GAL	0.001 qt

HW4600A54	SEAL 0.668 X 1.064 X 0.250 DOUBLE SHIELD	1.000 ea
MG1050Y01	CELEROL BALDOR GOLD	0.014 ga
85XU0407S04	4X1/4 U DRIVE PIN STAINLESS	2.000 ea
LD5018A03	CORD & PLUG SET 16/3 SJOOW 90C 300V 2' 6	1.000 ea
WD1000D88	T&B RA873M, TRM.INS RING, #10 STUD, 22-18 G	1.000 ea
WD4006B01	TYPE O/B+ 3M SCOTCHLOK WIRE CONNECTOR	5.000 ea
SP5056A110	34 TYPE L STATIONARY SWITCH W/#8 RED, E	1.000 ea
33CB4800A02	CAPACITOR COVER, STAMPED	1.000 ea
35GS3001A02	GASKET, CA.COVER, 5.38 LONG .06 CS301	1.000 ea
HA3100A45	THRUBOLT 10-32 X 8.875	4.000 ea
MN416A01	TAG-INSTAL-MAINT no wire (2400 bx)4/22	1.000 ea
LB1624	COMBINED WARNING LABEL, ISO/ANSI PICTOGR	1.000 ea
LB1118	LABEL, WARNING (ROLL LABEL)	1.000 ea
LC0008	CONNECTION LABEL	1.000 ea
NP1379L	ALUM IEC UL CC	1.000 ea
36PA1000	PKG GRP, PRINT PK1016A06	1.000 ea
LB1417	LABEL CARTON 6X4 PERFORATED BLANK ROLLS	1.000 ea

AC Induction Motor Performance Data

Record # 103199

Typical performance - not guaranteed values

Winding: 34WGS944-R002		Type: 3428L	Enclosure: TEFC	
Nameplate Data		220 V, 60 Hz: High Voltage Connection		
Rated Output (HP)	.75	Full Load Torque	1.138 LB-FT	
Volts	120/220	Start Configuration	direct on line	
Full Load Amps	8.7/4.4	Breakdown Torque	3.26 LB-FT	
R.P.M.	3450	Pull-up Torque	2.06 LB-FT	
Hz	60 Phase	1	Locked-rotor Torque	3.32 LB-FT
NEMA Design Code	L KVA Code	K	Starting Current	25.3 A
Service Factor (S.F.)		1	No-load Current	2.21 A
NEMA Nom. Eff.	67 Power Factor	79	Line-line Res. @ 25°C	2.8386 Ω A Ph 2.3332 Ω B Ph
Rating - Duty		40C AMB-CONT	Temp. Rise @ Rated Load	

Load Characteristics 220 V, 60 Hz, 0.75 HP

% of Rated Load	25	50	75	100	125	150
Power Factor	53	69	78	82	86	88
Efficiency	50.5	63.8	69.9	74.6	75.4	69.4
Speed	3558.4	3530.6	3499.8	3468.7	3430.1	3360.2
Line amperes	2.48	2.95	3.56	4.15	4.9	6.08

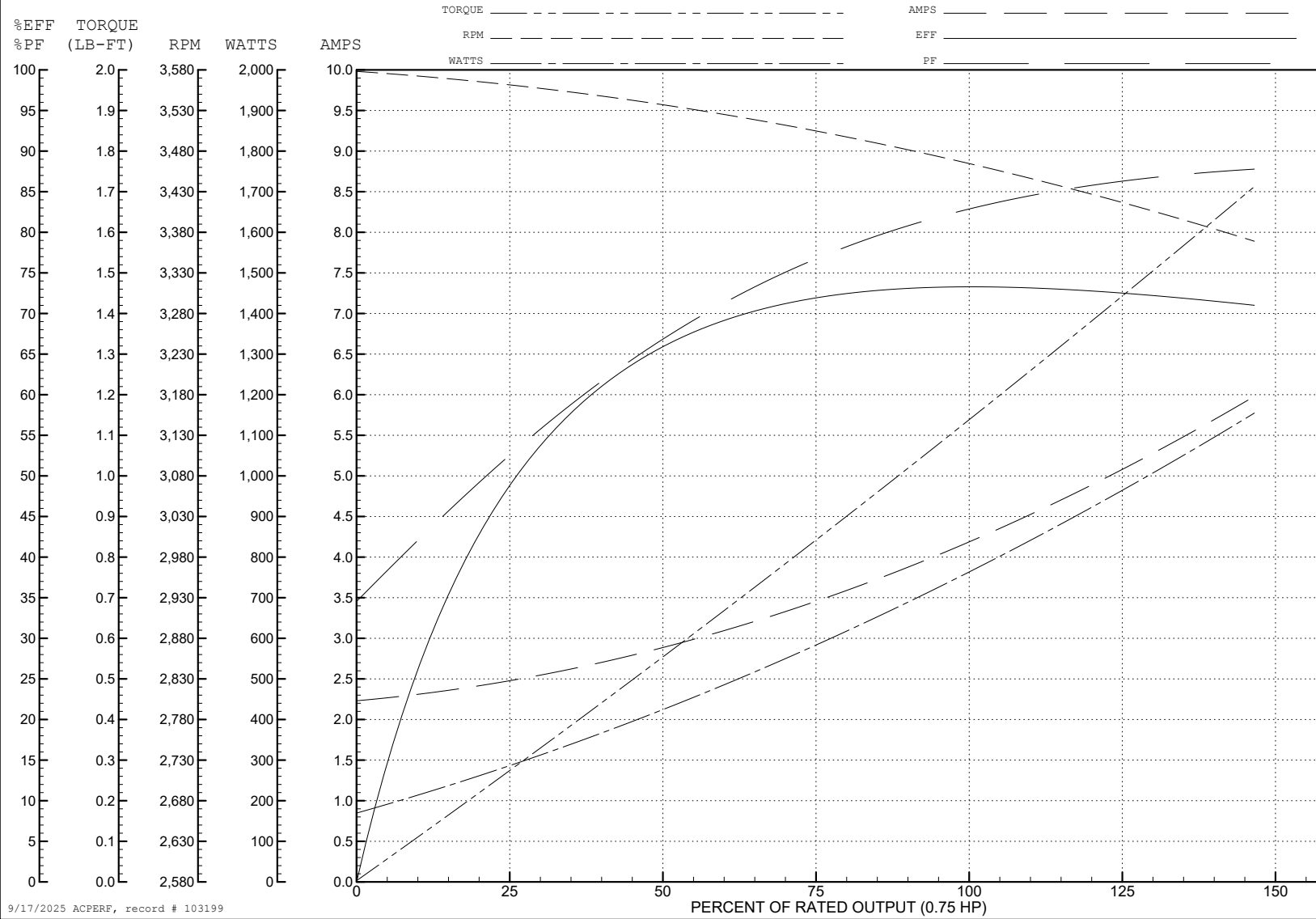
ABB Motors and Mechanical Inc.

WINDING # 34WGS944

Typical performance - not guaranteed values.

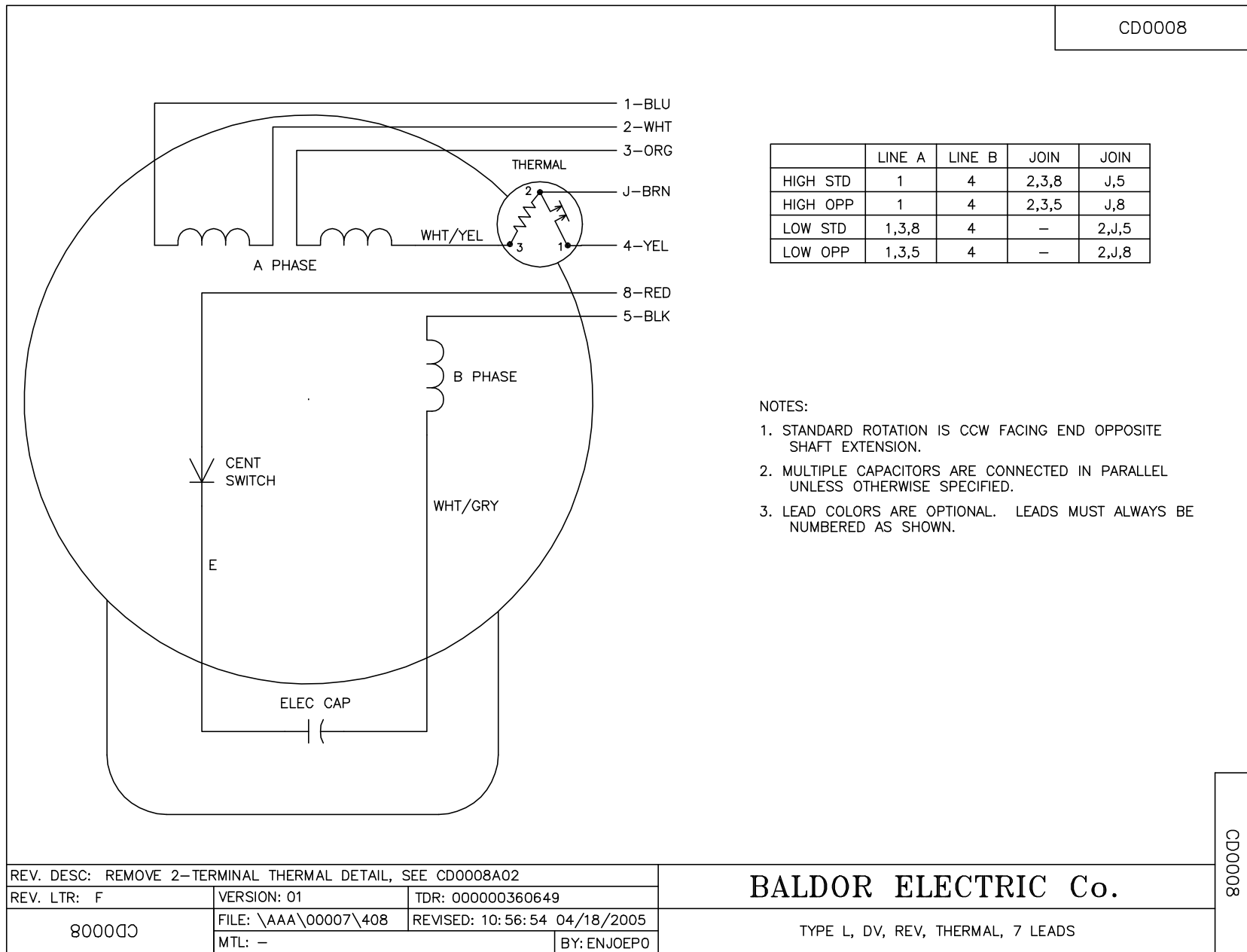
0.75 HP 1 PH 60 HZ 3450 RPM 220 V 3428L

TORQUES (LB-FT): PO=3.26 PU=2.06 LR=3.32 LRA=25.3



9/17/2025 ACPERF, record # 103199

CD0008



	LINE A	LINE B	JOIN	JOIN
HIGH STD	1	4	2,3,8	J,5
HIGH OPP	1	4	2,3,5	J,8
LOW STD	1,3,8	4	-	2,J,5
LOW OPP	1,3,5	4	-	2,J,8

NOTES:

1. STANDARD ROTATION IS CCW FACING END OPPOSITE SHAFT EXTENSION.
2. MULTIPLE CAPACITORS ARE CONNECTED IN PARALLEL UNLESS OTHERWISE SPECIFIED.
3. LEAD COLORS ARE OPTIONAL. LEADS MUST ALWAYS BE NUMBERED AS SHOWN.

REV. DESC: REMOVE 2-TERMINAL THERMAL DETAIL, SEE CD0008A02		
REV. LTR: F	VERSION: 01	TDR: 000000360649
800000	FILE: \AAA\00007\408	REVISED: 10:56:54 04/18/2005
	MTL: -	BY: ENJOEPO

BALDOR ELECTRIC Co.

TYPE L, DV, REV, THERMAL, 7 LEADS

CD0008